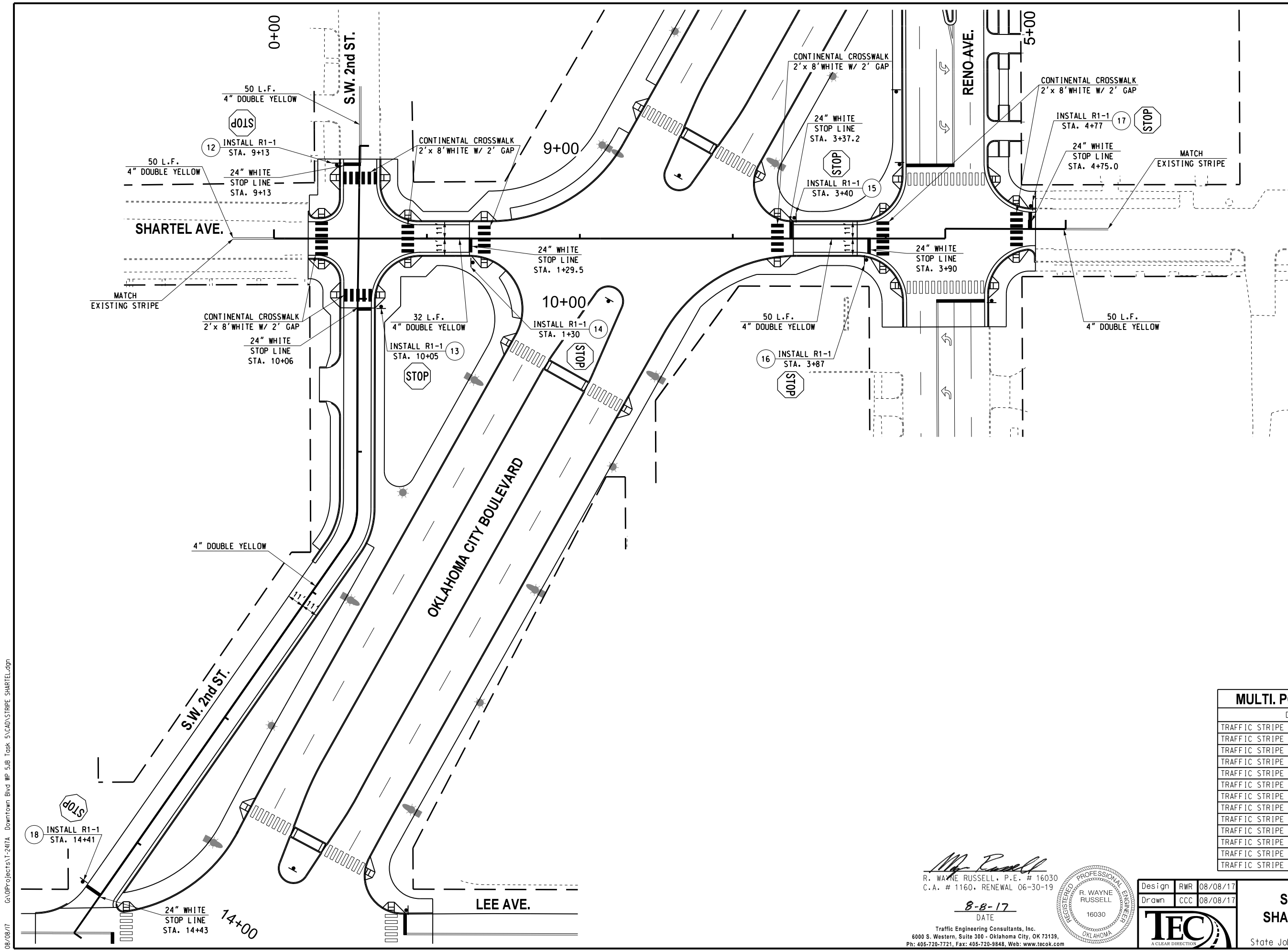
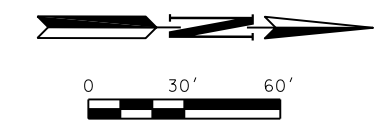


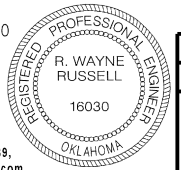
REVISIONS		
NO.	DESCRIPTION	DATE



MULTI. POLY. STRIPING SUM. TABLE

DESCRIPTION	UNIT	TOTALS
TRAFFIC STRIPE (MULTI. POLY.) 4" WHITE	L.F.	0
TRAFFIC STRIPE (MULTI. POLY.) 4" YELLOW	L.F.	1290
TRAFFIC STRIPE (MULTI. POLY.) 6" WHITE	L.F.	0
TRAFFIC STRIPE (MULTI. POLY.) 6" YELLOW	L.F.	0
TRAFFIC STRIPE (MULTI. POLY.) 6" BLACK	L.F.	0
TRAFFIC STRIPE (MULTI. POLY.) 8" WHITE	L.F.	0
TRAFFIC STRIPE (MULTI. POLY.) 8" YELLOW	L.F.	0
TRAFFIC STRIPE (MULTI. POLY.) 12" WHITE	L.F.	0
TRAFFIC STRIPE (MULTI. POLY.) 12" YELLOW	L.F.	0
TRAFFIC STRIPE (MULTI. POLY.) 24" WHITE	L.F.	350
TRAFFIC STRIPE (MULTI. POLY.) ARROWS	EA.	0
TRAFFIC STRIPE (MULTI. POLY.) WORDS	EA.	0
TRAFFIC STRIPE (MULTI. POLY.) SYMBOLS	EA.	0

R. Wayne Russell
 R. WAYNE RUSSELL, P.E. # 16030
 C.A. # 1160, RENEWAL 06-30-19



8-8-17
 DATE

Traffic Engineering Consultants, Inc.
 6000 S. Western, Suite 300 - Oklahoma City, OK 73139,
 Ph: 405-720-7721, Fax: 405-720-9848, Web: www.tecok.com

Design	RWR	08/08/17
Drawn	CCC	08/08/17



**SIGNING & STRIPING PLAN
 SHARTEL AVE. AND 2nd STREET**

State Job No. 17428(88) Sheet No. 160

08/08/17 G:\0\Projects\1-247A Downtown Blvd WP 5.1B Task 5\CAD\STRIPING SHARTEL.dgn